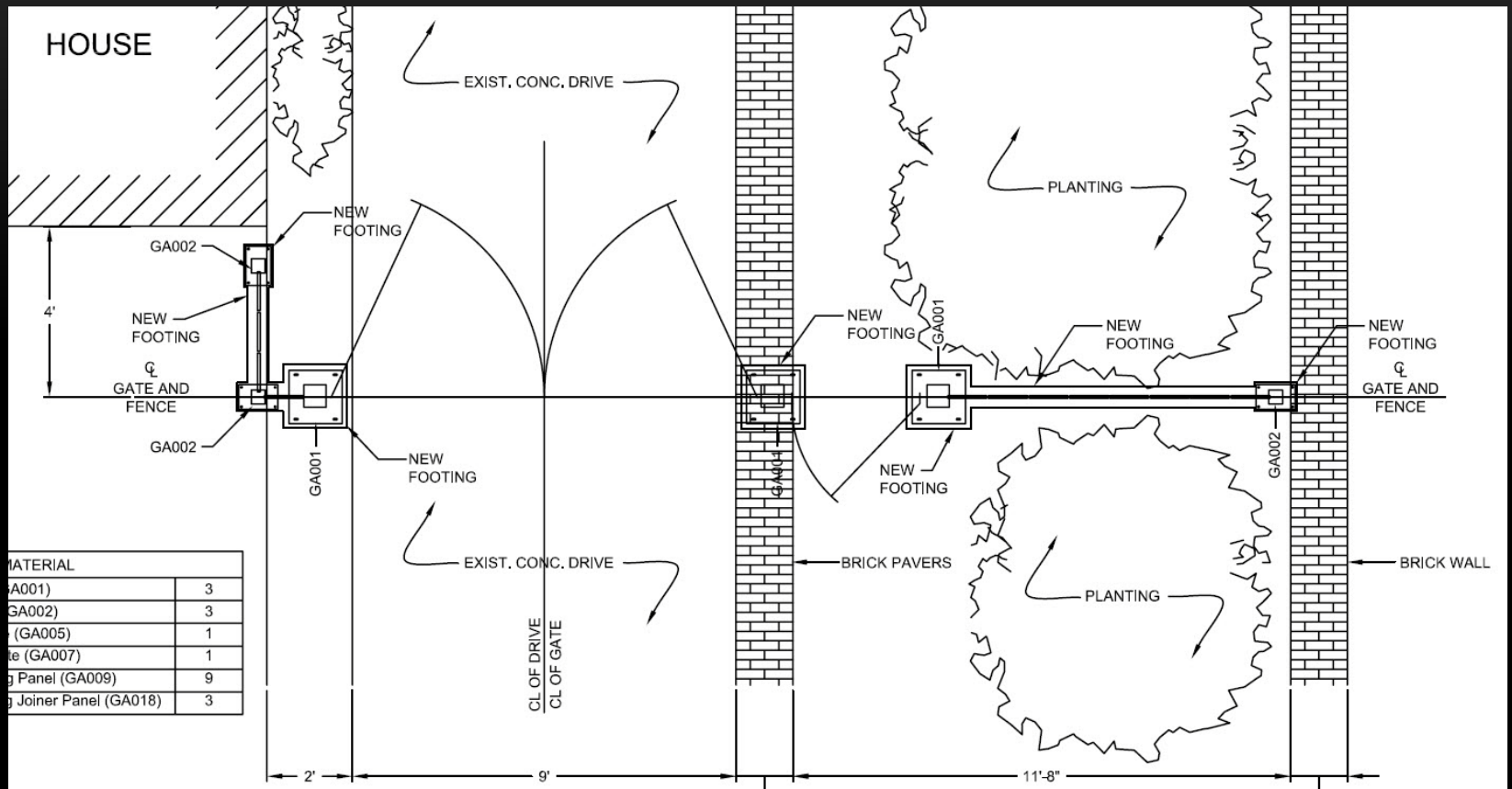


# Heritage Cast Iron USA gate and fence installation example 1

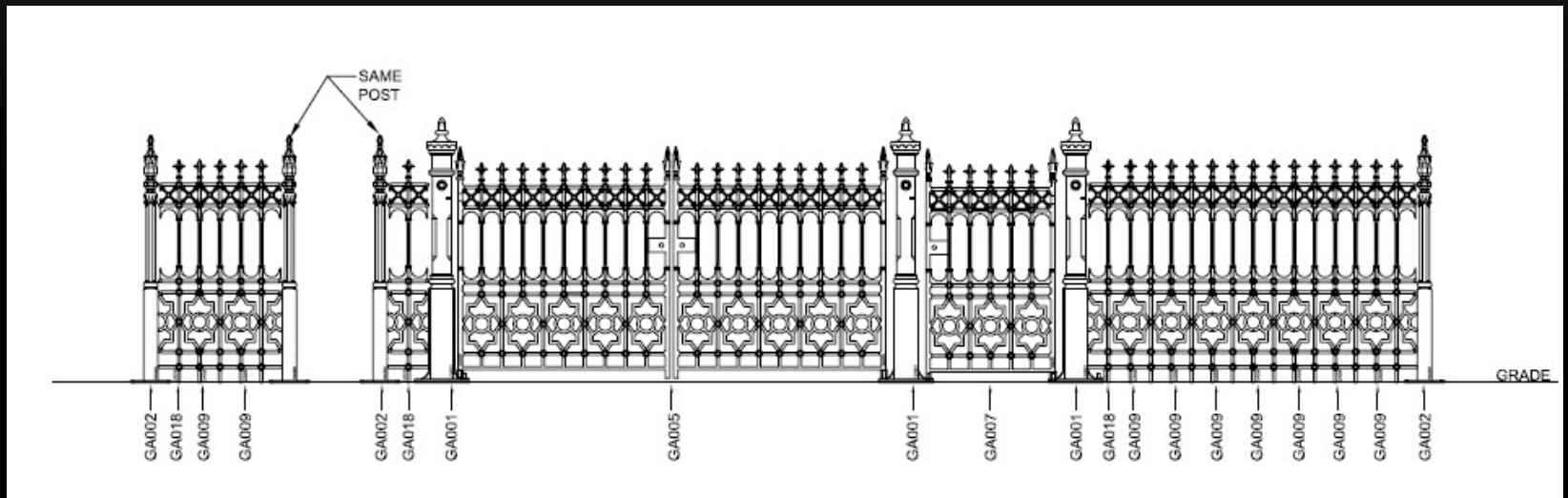
Stewart 12' Gate with Root Fix Full Height Fence



# Project 1: Plan View



# “Flat” Elevation: View From Street



# Photo simulation of installed gate and fence

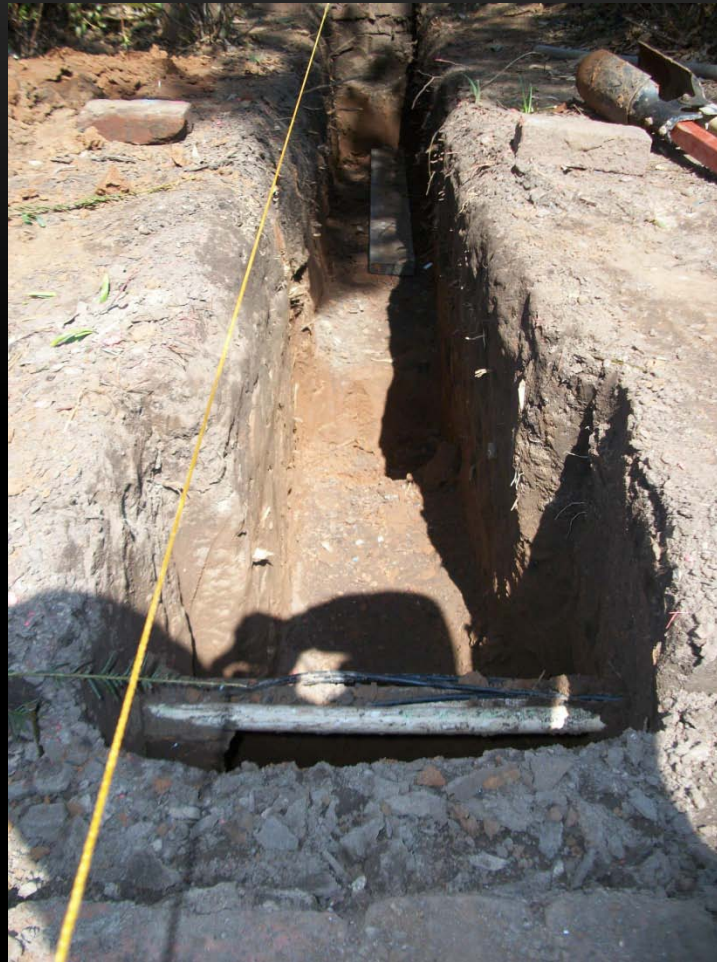




# Excavation For Footings



# Excavation For Footings





# Excavation For Footings



# Excavation For Footings and adding Rebar





# Excavation For Footings and adding Rebar



# Excavation For Footings and adding Rebar





# Forming up to make a neat finished surface





Forming up to make a neat finished surface





Pouring Concrete:  
First pour, now  
ready to set 2x4  
prior to finish pour  
and final dressing



# Inserting the 2x4 into concrete pour under fence locations



This creates a slot for the root fixing legs of the fence to fit into. Depending on your style of fence, the slot may need to be deeper or your footing contractor may pour the entire footing around the fence panels



Finish pour: note 2x4 is centered under fence location



# Finish Pour: 2x4 is located center





# Finish Pour: 2x4 is located center





Concrete is cured and 2x4 is removed to make slot to receive fence



Concrete is cured and 2x4 is removed to make slot





# Drilling the piers for install of posts using masonry anchors





# Drilled piers.

We recommend anchoring posts using stainless all-thread and epoxy



# Setting Post





Post is Anchored, Fence is braced with  
legs in slot



All set and level ready for final grouting





# All set and level ready for final grouting



HERITAGE  
CAST IRON USA  
|||||

# Recommendations

- Use a qualified footing contractor who is familiar with supporting dynamic loads for your soil and frost line conditions. In some cases consulting with a footing design engineer may be advised before proceeding.
- Use a qualified installer who is familiar with lifting and setting gates and fences of this weight.
- Use a qualified local gate operator installer and licensed electrician if you automate your gates. Inform your installer of the weights of these products so that they may match the best operator to the ironwork. Follow all recommended safety guidelines.
- Call on HCIUSA for a plan and elevation view of your installation, this is complimentary and will allow you to better coordinate the trades involved.





Showroom and Warehouse

639 West 41<sup>st</sup> ST

Tulsa, OK 74107

918-592-1700 X12

[sales@heritagecastironusa.com](mailto:sales@heritagecastironusa.com)

[www.heritagecastironusa.com](http://www.heritagecastironusa.com)

Distributed exclusively in the USA by Wiemann Metalcraft [www.wmcraft.com](http://www.wmcraft.com)