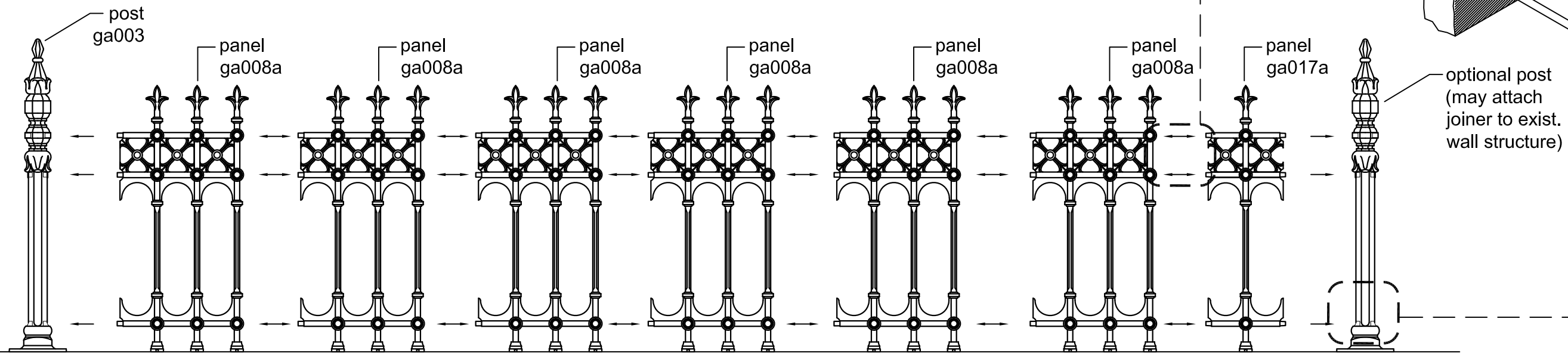
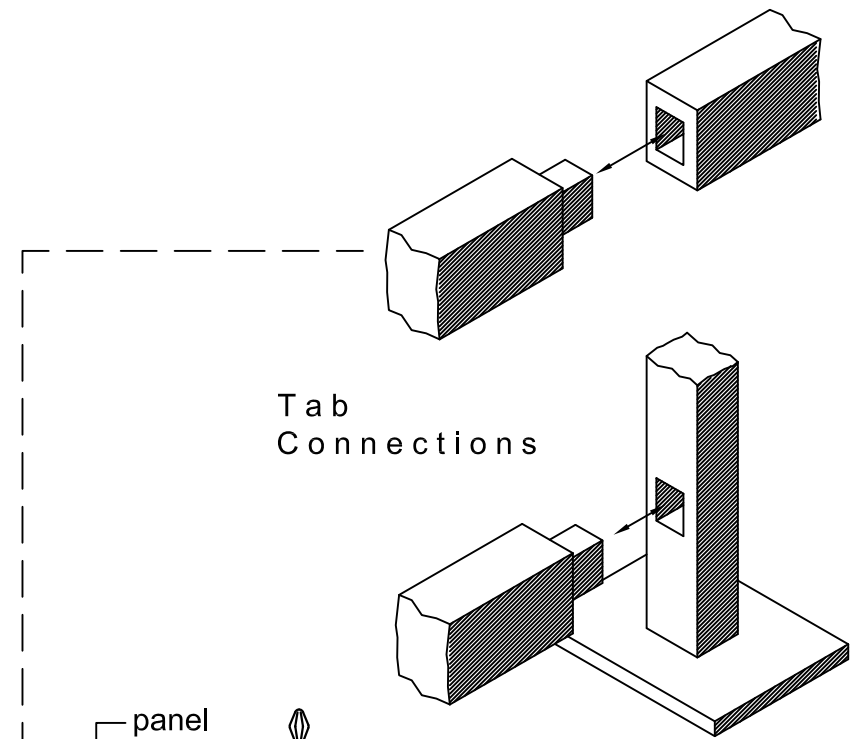
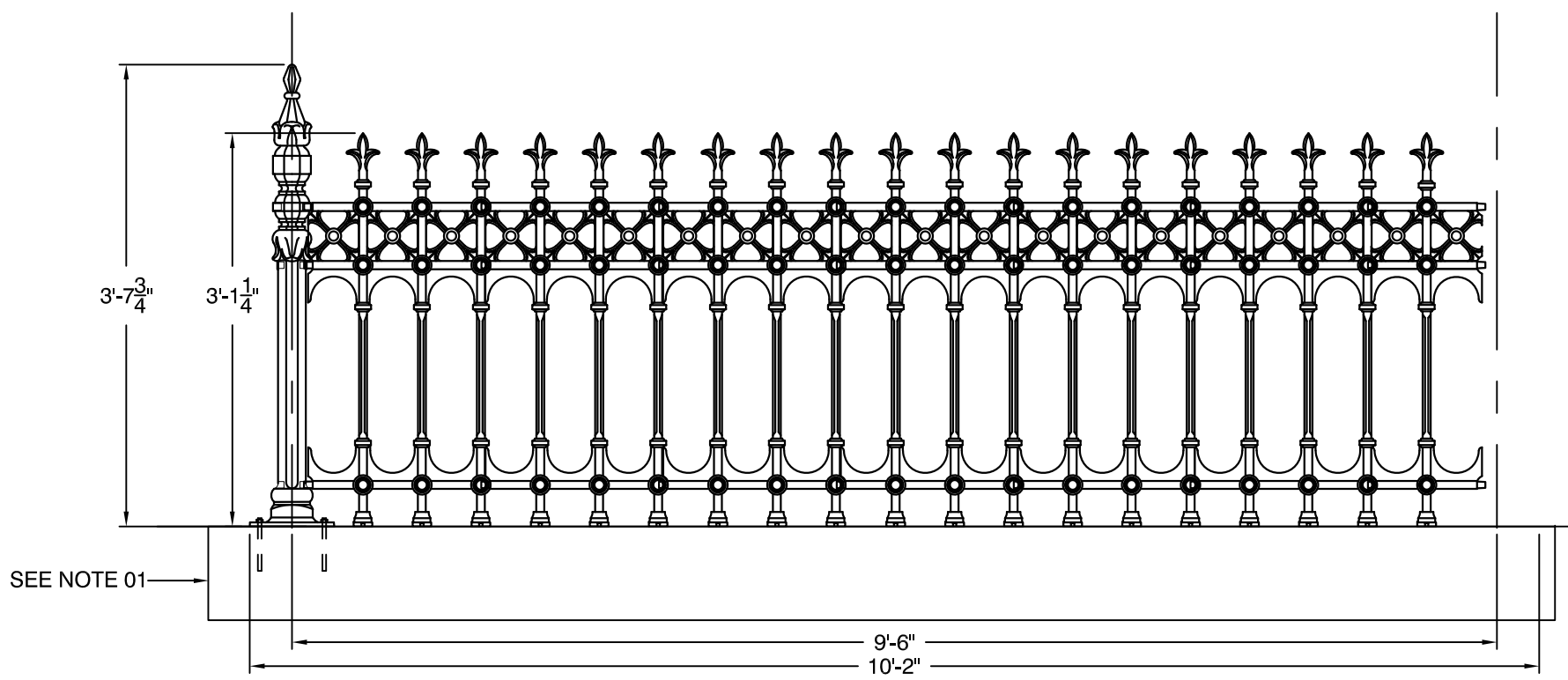


NOTES:
 01. FOOTING SIZES TO BE DETERMINED DURING TIME OF INSTALLATION. DEPTH OF FOOTING DETERMINED BY SOIL CONDITIONS / FROST LINE.



Putting It Together



Construction
 All railing, gates and posts are crafted in solid cast iron, and are modular in design for ease of installation.

Finishing
 Components are provided with a rust-preventative universal primer basecoat, ready for application of final paint finish upon installation.

Item #	Qty.	Description	Weight
GA003	1	Stewart Half Height Railing Post	51 lbs
GA008A	6	Stewart Half Height Railing Panel With Feet	45 lbs Per Panel
GA017A	1	Stewart Half Height Joiner Panel With Feet	22 lbs Per Panel
Single Half Height Railing Stay Suggested Or As Necessary To Suit Installation			

SCALE : 3/4"=1'-0"

STEWART
GA008a